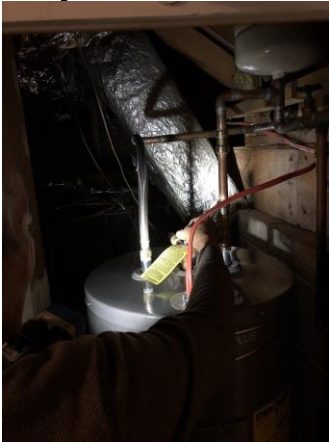




The Parish Rectory is now ALL-ELECTRIC ⚡💡

On Saturday, January 14, we replaced the gas hot water heater with a high efficiency electric one. With the addition of new high efficiency heat pumps, the gas line will now be cut off at the Rectory. These advancements will lower our carbon emissions and also save us approximately \$2000 a year in energy bills. We received a grant from Georgia Interfaith Power and Light to help with the heat pump electrical work and are required to keep track of our energy use, which will be published for other parishes to see. The Parish Office is already all-electric and has been that way for some time now.

***Thanks to Kahn for helping with this project
compressors that was exposed to the street***



New fence to protect one of the heat pump



Abandoned gas line at the Parish Office



***Stay tuned for future newsletters to learn how you can electrify your home through
Inflation Reduction Act rebates and tax credits.***

Kendeda Building Field Trip

We have a field trip scheduled to the Georgia Tech campus for **Friday, February 3rd at 11 AM**. The tour will last for 1 and ½ hours. From what I understand, the Kendeda Building produces more energy than it uses. We will be meeting at the church at 10 AM and carpooling or catching the 193 bus to the East Point MARTA station, depending on how many people sign up, ***by replying to this newsletter or texting/calling me at the # below in the signature line.***

If you sign up, you will be registered a second time for the drawing for the battery electric leaf blower.



Here is a video for you to watch before you go:

<https://www.youtube.com/watch?v=YYhfYH6h21I&t=1s>



[Georgia Tech-Kendeda Building for Innovative Sustainable Design: A Lively Tour of a Living Building - YouTube](https://www.youtube.com/watch?v=YYhfYH6h21I&t=1s)

The Kendeda Building at Georgia Tech is a multi-disciplinary, non-departmental education building that is pursuing the Living Building Challenge – the world’...

www.youtube.com

Georgia Interfaith Power and Light Green Team Summit Open to Everyone

If you would like to attend the Georgia Interfaith Power and Light Green Team Summit, please register here.

<https://secure.everyaction.com/yWyblbcwAkGjKyLzoAFHKw2>

Tickets are \$35 and include dinner and wine. Our parish will be awarded a \$4,675 grant. Daphny Keel and I will be attending. Please let me know if you register and we can carpool / MARTA together.

The event is on Sunday, February 26 from 2 - 8 PM at Temple Sinai in Sandy Springs.

The 193 Bus to Become a Bus Rapid Transit Line

I have used the 193 bus to travel to Clayton County to visit friends and see the Clayton County Water Authority wetlands. It already has high frequency service. MARTA has abandoned plans to create a commuter line to Clayton County and place their resources in

dedicated lanes and "train-like" upgraded stops on the 193 route. I think this is **great news!** as it serves more people at the community level and on a frequent all-day schedule.

Please Recycle Those Aluminum Cans



[Want to Help Reduce PFC Emissions? Recycle Those Cans](#)

Aluminum, unlike plastic, is infinitely recyclable. An aluminum can you drink from today may have been a different aluminum can just months ago and, if continually recycled, could be used to make ...

insideclimatenews.org

Only 45% of Aluminum Cans are Recycled in the U.S. This fact befuddles me because recycling, it seems, has become robustly mainstream. Aluminum, unlike plastic, is recyclable forever and is a valuable metal needed in the energy transition to phaseout fossil fuels. Also, aluminum, unlike glass, is light and easy to transport with less energy consumption.

Please Donate When You Can To Help Us With Sanctuary Heat Pumps

- Cash (Second Collection at Mass)
- Check - Please put "Laudato Si Ministry" on the memo line
- Online here and to see our mission statement:

<https://secure.myvanco.com/YM52/campaign/C-13BDR>

If you would like to follow me on LinkedIn, I place posts on climate issues here for discussion:

<https://www.linkedin.com/in/earthclimate/>

Peace Be With You

John Duke
Green Team Lead
P.O. Box 87074
College Park, GA 30337
404-313-0059

